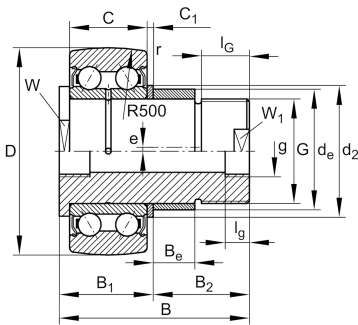
**ZLE5204-2Z**

## Stud type track roller

Stud type track rollers ZLE52...-2Z, double row self-retaining angular contact ball bearings with particularly thick-walled outer ring, ball and cage assembly, eccentric collar and with a solid, long roller stud with external thread, axial guidance of outer ring is provided by the balls, sealing shield on both sides, mounting aid on the face and bolt sides: spanner flat, relubricatable

## Technical information



## Your current product variant

Type of Seal	2Z	Sealing shield on both sides
Outer ring profile	R500	R500
Relubrication	KS	Via threaded connections on the head and stud
Assembling aid head	SF	Spanner flat
Mounting aid	SF	Spanner flat

## Main Dimensions &amp; Performance Data

D	52 mm	Outside diameter
d <sub>e</sub>	24 mm	Diameter of eccentric
B	76 mm	Width
C <sub>r w</sub>	15.400 N	Basic dynamic load rating, radial
C <sub>0 r w</sub>	11.400 N	Basic static load rating, radial
C <sub>u r w</sub>	590 N	Fatigue load limit, radial
n <sub>D G</sub>	7.300 1/min	Speed on permanent grease lubrication
F <sub>r per</sub>	10.200 N	Permissible dynamic load outer ring, radial
m	395,98 g	Weight



## Dimensions

B 1 max	26 mm	Maximum width of thrust washer
B 2	50 mm	Bolt/stud length effectively
C	20,6 mm	Width, outer ring
C 1	2,5 mm	Protrusion outer ring to thrust washer
d 2	30 mm	Stop diameter of thrust washer
r min	1 mm	Minimum chamfer dimension
W	22 mm	Width of flats
W 1	17 mm	Width of flats
e	1 mm	Eccentricity
B e	18 mm	Width, eccentric
g	M8X1	Thread inside
l g	8 mm	Thread length (inner)
G	M20X1,5	Thread
l G min	29 mm	Minimum thread length
R	500 mm	Radius of outer ring outside profile

## Additional information

M A	150 Nm	Tightening torque nut
-----	--------	-----------------------