

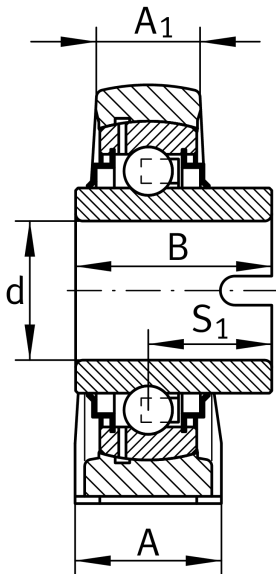
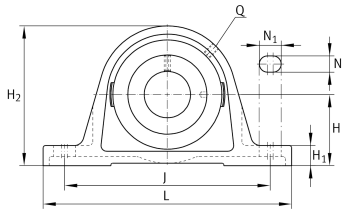
IMAGE  
COMING SOON**RASEL20-XL-N**

## Plummer block housing unit

Plummer block housing units RASEL, cast iron housing, non-locating bearing, drive slot on inner ring, R seals

X-life

## Technical information



## Your current product variant

Material	GG	Grey cast iron
Groove	N	Cast iron housing with undercut slot for end caps

## Main Dimensions &amp; Performance Data

d	20 mm	Bore diameter
L	130 mm	Length total
H <sub>2</sub>	64 mm	Height
≈m	0,58 kg	Weight

## Mounting dimensions

J	97,5 mm	Distance fixing bore
N	11 mm	Width (slot)
N <sub>1</sub>	19 mm	Length (slot)



### Dimensions

H	33,3 mm	Distance shaft axis
A	32 mm	Width (base)
A <sub>1</sub>	19 mm	Width (head)
H <sub>1</sub>	14,5 mm	Height (base)
B	34,1 mm	Width
S <sub>1</sub>	18,5 mm	Distance of raceway to locking collar
Q	M6	Connection thread for lubrication

### Additional information

ASE04-FA125	Housing
GLE20-XL-KRR-B	Bearing designation
KASK04	Protecting cap

### Temperature range

T <sub>min</sub>	-40 °C	Operating temperature min.
T <sub>max</sub>	180 °C	Operating temperature max.