

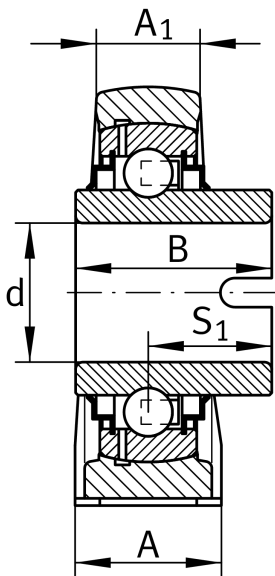
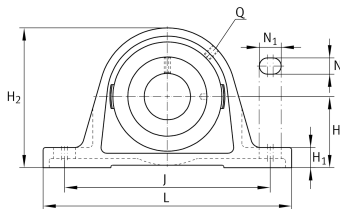
IMAGE  
COMING SOON**RASEL25-XL-N**

## Plummer block housing unit

Plummer block housing units RASEL, cast iron housing, non-locating bearing, drive slot on inner ring, R seals

X-life

## Technical information



## Your current product variant

|          |    |   |
|----------|----|---|
| Material | GG | Grey cast iron                                    |
| Groove   | N  | Cast iron housing with undercut slot for end caps |

## Main Dimensions &amp; Performance Data

|                |        |               |
|----------------|--------|---------------|
| d              | 25 mm  | Bore diameter |
| L              | 130 mm | Length total  |
| H <sub>2</sub> | 70 mm  | Height        |
| ≈m             | 0,7 kg | Weight        |

## Mounting dimensions

|                |          |                      |
|----------------|----------|----------------------|
| J              | 102,5 mm | Distance fixing bore |
| N              | 11 mm    | Width (slot)         |
| N <sub>1</sub> | 19 mm    | Length (slot)        |



### Dimensions

|                |         |                                       |
|----------------|---------|---------------------------------------|
| H              | 36,5 mm | Distance shaft axis                   |
| A              | 36 mm   | Width (base)                          |
| A <sub>1</sub> | 21 mm   | Width (head)                          |
| H <sub>1</sub> | 14,5 mm | Height (base)                         |
| B              | 34,9 mm | Width                                 |
| S <sub>1</sub> | 20,2 mm | Distance of raceway to locking collar |
| Q              | M6      | Connection thread for lubrication     |

### Additional information

|                |                     |
|----------------|---------------------|
| ASE05-FA125    | Housing             |
| GLE25-XL-KRR-B | Bearing designation |
| KASK05         | Protecting cap      |

### Temperature range

|                  |        |                            |
|------------------|--------|----------------------------|
| T <sub>min</sub> | -40 °C | Operating temperature min. |
| T <sub>max</sub> | 180 °C | Operating temperature max. |