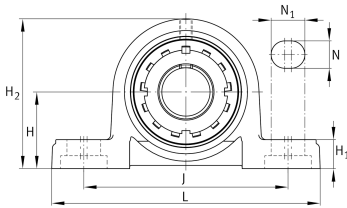
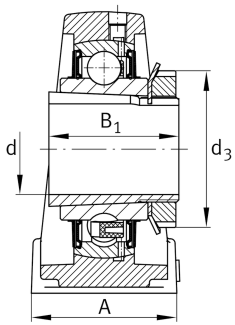


**FAG****UKP205**

Plummer block housing unit

Plummer block housing units UKP, cast iron housing, with long base, radial insert ball bearing with adapter sleeve, RSR seals

Technical information

**Your current product variant**

Material	GG	Grey cast iron
Housing clearance	J7	Normal swivel torque

Main Dimensions & Performance Data

d	20 mm	Bore diameter
L	140 mm	Length total
H ₂	71 mm	Height
≈m	0,84 kg	Weight

Mounting dimensions

J	105 mm	Distance fixing bore
N	13 mm	Width (slot)
N ₁	19 mm	Length (slot)

Dimensions

H	36,5 mm	Distance shaft axis
A	38 mm	Width (base)
H ₁	15 mm	Height (base)
B ₁	35 mm	Locking collar total width
Q	M6	Connection thread for lubrication



Additional information

P205	Housing
UK205	Bearing designation

Temperature range

T _{min}	-20 °C	Operating temperature min.
T _{max}	120 °C	Operating temperature max.