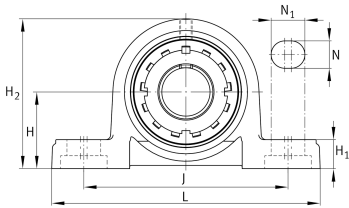
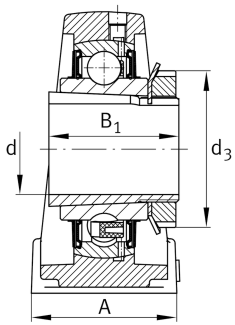


**FAG****UKP210**

Plummer block housing unit

Plummer block housing units UKP, cast iron housing, with long base, radial insert ball bearing with adapter sleeve, RSR seals

Technical information

**Your current product variant**

Material	GG	Grey cast iron
Housing clearance	J7	Normal swivel torque

Main Dimensions & Performance Data

d	45 mm	Bore diameter
L	206 mm	Length total
H ₂	114 mm	Height
≈m	2,95 kg	Weight

Mounting dimensions

J	159 mm	Distance fixing bore
N	20 mm	Width (slot)
N ₁	25 mm	Length (slot)

Dimensions

H	57,2 mm	Distance shaft axis
A	60 mm	Width (base)
H ₁	21 mm	Height (base)
B ₁	55 mm	Locking collar total width
Q	M6	Connection thread for lubrication



View product details on medias

20.05.2026, 14:02:21 UTC

SCHAEFFLER

Additional information

P210	Housing
UK210	Bearing designation

Temperature range

T _{min}	-20 °C	Operating temperature min.
T _{max}	120 °C	Operating temperature max.