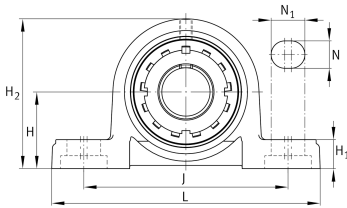
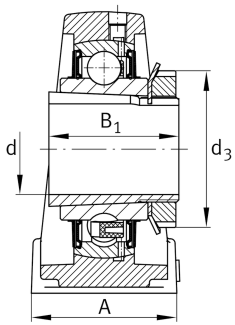


**FAG****UKP212**

## Plummer block housing unit

Plummer block housing units UKP, cast iron housing, with long base, radial insert ball bearing with adapter sleeve, RSR seals

## Technical information

**Your current product variant**

Material	GG	Grey cast iron
Housing clearance	J7	Normal swivel torque

**Main Dimensions & Performance Data**

d	55 mm	Bore diameter
L	241 mm	Length total
H <sub>2</sub>	138 mm	Height
≈m	4,71 kg	Weight

**Mounting dimensions**

J	184 mm	Distance fixing bore
N	20 mm	Width (slot)
N <sub>1</sub>	25 mm	Length (slot)

**Dimensions**

H	69,8 mm	Distance shaft axis
A	70 mm	Width (base)
H <sub>1</sub>	25 mm	Height (base)
B <sub>1</sub>	62 mm	Locking collar total width
Q	M6	Connection thread for lubrication



### Additional information

P212	Housing
UK212	Bearing designation

### Temperature range

T <sub>min</sub>	-20 °C	Operating temperature min.
T <sub>max</sub>	120 °C	Operating temperature max.