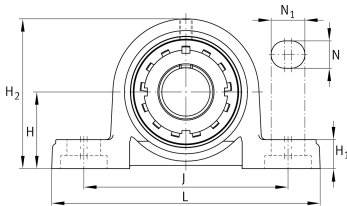
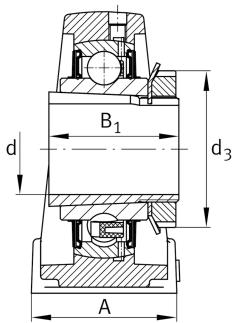


**FAG****UKP213**

## Plummer block housing unit

Plummer block housing units UKP, cast iron housing, with long base, radial insert ball bearing with adapter sleeve, RSR seals

## Technical information

**Your current product variant**

Material	GG	Grey cast iron
Housing clearance	J7	Normal swivel torque

**Main Dimensions & Performance Data**

d	60 mm	Bore diameter
L	265 mm	Length total
H <sub>2</sub>	151 mm	Height
≈m	5,71 kg	Weight

**Mounting dimensions**

J	203 mm	Distance fixing bore
N	25 mm	Width (slot)
N <sub>1</sub>	29 mm	Length (slot)

**Dimensions**

H	76,2 mm	Distance shaft axis
A	70 mm	Width (base)
H <sub>1</sub>	27 mm	Height (base)
B <sub>1</sub>	65 mm	Locking collar total width
Q	M6	Connection thread for lubrication



### Additional information

P213	Housing
UK213	Bearing designation

### Temperature range

T <sub>min</sub>	-20 °C	Operating temperature min.
T <sub>max</sub>	120 °C	Operating temperature max.