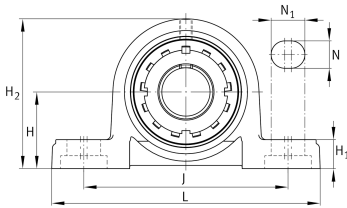
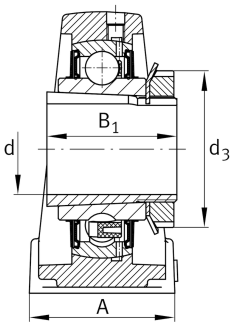


**FAG****UKP215**

Plummer block housing unit

Plummer block housing units UKP, cast iron housing, with long base, radial insert ball bearing with adapter sleeve, RSR seals

Technical information

**Your current product variant**

Material	GG	Grey cast iron
Housing clearance	J7	Normal swivel torque

Main Dimensions & Performance Data

d	65 mm	Bore diameter
L	275 mm	Length total
H ₂	163 mm	Height
≈m	7,16 kg	Weight

Mounting dimensions

J	217 mm	Distance fixing bore
N	25 mm	Width (slot)
N ₁	31 mm	Length (slot)

Dimensions

H	82,6 mm	Distance shaft axis
A	74 mm	Width (base)
H ₁	28 mm	Height (base)
B ₁	73 mm	Locking collar total width
Q	M6	Connection thread for lubrication



Additional information

P215	Housing
UK215	Bearing designation

Temperature range

T _{min}	-20 °C	Operating temperature min.
T _{max}	120 °C	Operating temperature max.