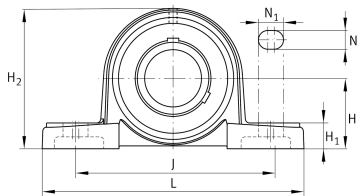


**FAG****UCP208-24** [↗](#)

## Plummer block housing unit

Plummer block housing units UCP, cast iron housing, with long base, radial insert ball bearing with grub screws in inner ring, RSR seals

## Technical information



## Your current product variant

Material	GG	Grey cast iron
Housing clearance	J7	Normal swivel torque

## Main Dimensions &amp; Performance Data

d	38,1 mm	Bore diameter
L	184 mm	Length total
H <sub>2</sub>	98 mm	Height
C <sub>r</sub>	34.500 N	Basic dynamic load rating, radial
C <sub>0r</sub>	19.800 N	Basic static load rating, radial
C <sub>ur</sub>	1.030 N	Fatigue load limit, radial
≈m	2 kg	Weight

## Mounting dimensions

J	137 mm	Distance fixing bore
N	17 mm	Width (slot)
N <sub>1</sub>	21 mm	Length (slot)



### Dimensions

H	49,2 mm	Distance shaft axis
A	54 mm	Width (base)
H <sub>1</sub>	18 mm	Height (base)
B	49,2 mm	Width
S <sub>1</sub>	30,2 mm	Distance of raceway to locking collar
Q	M6	Connection thread for lubrication

### Additional information

P208	Housing
UC208-24	Bearing designation

### Temperature range

T <sub>min</sub>	-20 °C	Operating temperature min.
T <sub>max</sub>	120 °C	Operating temperature max.