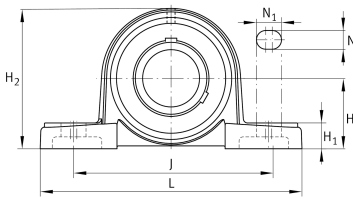


**FAG****UCP213**

Plummer block housing unit

Plummer block housing units UCP, cast iron housing, with long base, radial insert ball bearing with grub screws in inner ring, RSR seals

Technical information

**Your current product variant**

Material	GG	Grey cast iron
Housing clearance	J7	Normal swivel torque

Main Dimensions & Performance Data

d	65 mm	Bore diameter
L	265 mm	Length total
H ₂	151 mm	Height
C _r	61.000 N	Basic dynamic load rating, radial
C _{0r}	40.000 N	Basic static load rating, radial
C _{ur}	2.090 N	Fatigue load limit, radial
≈m	5,55 kg	Weight

Mounting dimensions

J	203 mm	Distance fixing bore
N	25 mm	Width (slot)
N ₁	29 mm	Length (slot)



Dimensions

H	76,2 mm	Distance shaft axis
A	70 mm	Width (base)
H ₁	27 mm	Height (base)
B	65,1 mm	Width
S ₁	39,7 mm	Distance of raceway to locking collar
Q	M6	Connection thread for lubrication

Additional information

P213	Housing
UC213	Bearing designation

Temperature range

T _{min}	-20 °C	Operating temperature min.
T _{max}	120 °C	Operating temperature max.