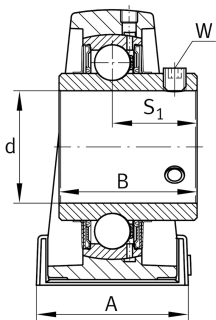
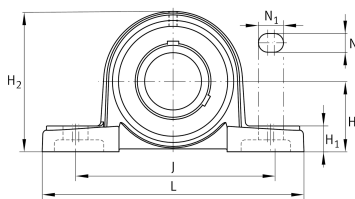


**FAG****UCP216**

Plummer block housing unit

Plummer block housing units UCP, cast iron housing, with long base, radial insert ball bearing with grub screws in inner ring, RSR seals

Technical information

**Your current product variant**

Material	GG	Grey cast iron
Housing clearance	J7	Normal swivel torque

Main Dimensions & Performance Data

d	80 mm	Bore diameter
L	292 mm	Length total
H ₂	175 mm	Height
C _r	76.000 N	Basic dynamic load rating, radial
C _{0r}	54.000 N	Basic static load rating, radial
C _{ur}	2.700 N	Fatigue load limit, radial
≈m	8,4 kg	Weight

Mounting dimensions

J	232 mm	Distance fixing bore
N	25 mm	Width (slot)
N ₁	31 mm	Length (slot)



Dimensions

H	88,9 mm	Distance shaft axis
A	78 mm	Width (base)
H ₁	30 mm	Height (base)
B	82,6 mm	Width
S ₁	49,3 mm	Distance of raceway to locking collar
Q	M6	Connection thread for lubrication

Additional information

P216	Housing
UC216	Bearing designation

Temperature range

T _{min}	-20 °C	Operating temperature min.
T _{max}	120 °C	Operating temperature max.