

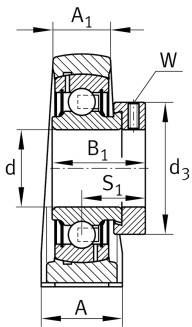
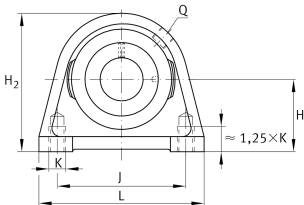
**PSHE17-XL**

## Plummer block housing unit

Plummer block housing units PSHE, cast iron housing, radial insert ball bearing with eccentric locking collar, P seals

X-life

## Technical information



## Your current product variant

Material	GG	Grey cast iron
----------	----	----------------

## Main Dimensions &amp; Performance Data

d	17 mm	Bore diameter
L	63 mm	Length total
H <sub>2</sub>	57 mm	Height
≈m	0,38 kg	Weight

## Mounting dimensions

J	47 mm	Distance fixing bore
K	M8	Thread fixing bore

## Dimensions

H	30,2 mm	Distance shaft axis
A	30 mm	Width (base)
A <sub>1</sub>	18 mm	Width (head)
Q	M6	Connection thread for lubrication
B <sub>1</sub>	28,6 mm	Locking collar total width
S <sub>1</sub>	22,1 mm	Distance of raceway to locking collar



### Additional information

SHE03	Housing
GRAE17-XL-NPP-B	Bearing designation

### Temperature range

T <sub>min</sub>	-20 °C	Operating temperature min.
T <sub>max</sub>	120 °C	Operating temperature max.