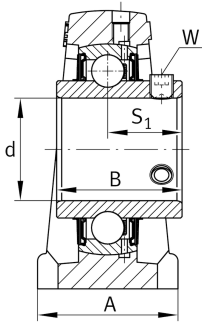
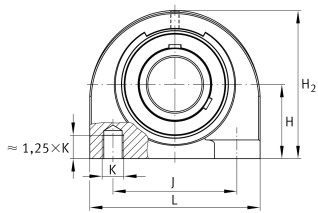
**FAG****UCPA204-12** [↗](#)

## Plummer block housing unit

Plummer block housing units UCPA, cast iron housing, with short base, radial insert ball bearing with grub screws in inner ring, RSR seals

## Technical information



## Your current product variant

Material	GG	Grey cast iron
Housing clearance	J7	Normal swivel torque
Material	GG	Cast iron

## Main Dimensions &amp; Performance Data

d	19,05 mm	Bore diameter
L	76 mm	Length total
H <sub>2</sub>	62 mm	Height
C <sub>r</sub>	13.600 N	Basic dynamic load rating, radial
C <sub>0r</sub>	6.600 N	Basic static load rating, radial
C <sub>ur</sub>	345 N	Fatigue load limit, radial
≈m	0,62 kg	Weight

## Mounting dimensions

J	52 mm	Distance fixing bore
K	M10	Thread fixing bore



### Dimensions

H	30,2 mm	Distance shaft axis
A	38 mm	Width (base)
Q	M6	Connection thread for lubrication
B	31 mm	Width of inner ring
S <sub>1</sub>	18,3 mm	Distance of raceway to locking collar

### Additional information

PA204	Housing
UC204-12	Bearing designation

### Temperature range

T <sub>min</sub>	-20 °C	Operating temperature min.
T <sub>max</sub>	120 °C	Operating temperature max.