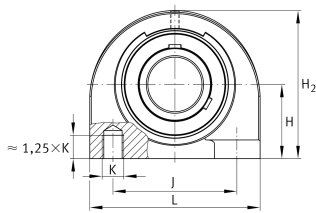


**FAG****UCPA206-20**

## Plummer block housing unit

Plummer block housing units UCPA, cast iron housing, with short base, radial insert ball bearing with grub screws in inner ring, RSR seals

## Technical information

**Your current product variant**

Material	GG	Grey cast iron
Housing clearance	J7	Normal swivel torque
Material	GG	Cast iron

**Main Dimensions & Performance Data**

d	31,75 mm	Bore diameter
L	94 mm	Length total
H <sub>2</sub>	84 mm	Height
C <sub>r</sub>	20.700 N	Basic dynamic load rating, radial
C <sub>0r</sub>	11.300 N	Basic static load rating, radial
C <sub>ur</sub>	590 N	Fatigue load limit, radial
m	1,196 kg	Weight

**Mounting dimensions**

J	66 mm	Distance fixing bore
K	M14	Thread fixing bore



### Dimensions

H	42,9 mm	Distance shaft axis
A	48 mm	Width (base)
Q	M6	Connection thread for lubrication
B	38,1 mm	Width of inner ring
S <sub>1</sub>	22,2 mm	Distance of raceway to locking collar

### Additional information

PA206	Housing
UC206-20	Bearing designation

### Temperature range

T <sub>min</sub>	-20 °C	Operating temperature min.
T <sub>max</sub>	120 °C	Operating temperature max.