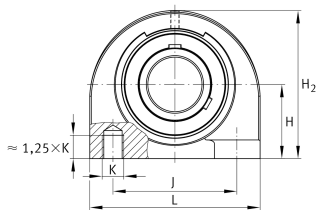
**FAG****UCPA210**

Plummer block housing unit

Plummer block housing units UCPA, cast iron housing, with short base, radial insert ball bearing with grub screws in inner ring, RSR seals

Technical information

**Your current product variant**

Material	GG	Grey cast iron
Housing clearance	J7	Normal swivel torque
Material	GG	Cast iron

Main Dimensions & Performance Data

d	50 mm	Bore diameter
L	130 mm	Length total
H ₂	116 mm	Height
C _r	37.500 N	Basic dynamic load rating, radial
C _{0r}	23.200 N	Basic static load rating, radial
C _{ur}	1.210 N	Fatigue load limit, radial
m	2,78 kg	Weight

Mounting dimensions

J	94 mm	Distance fixing bore
K	M16	Thread fixing bore



Dimensions

H	57,2 mm	Distance shaft axis
A	60 mm	Width (base)
Q	M6	Connection thread for lubrication
B	51,6 mm	Width of inner ring
S ₁	32,6 mm	Distance of raceway to locking collar

Additional information

PA210	Housing
UC210	Bearing designation

Temperature range

T _{min}	-20 °C	Operating temperature min.
T _{max}	120 °C	Operating temperature max.