

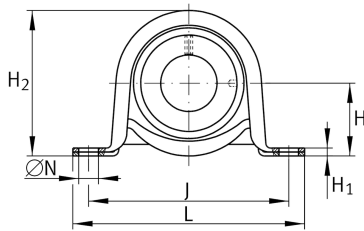
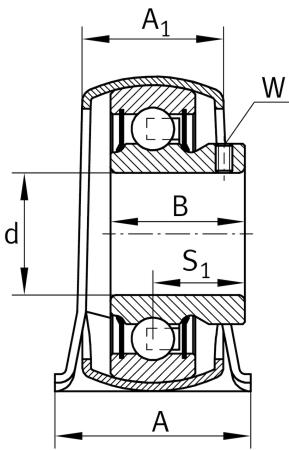
IMAGE
COMING SOON**PBY25-XL**

Plummer block housing unit

Plummer block housing unit PBY..-XL, RIBB
sheet metal PB

X-life

Technical information



Your current product variant

Material Steel sheet

Main Dimensions & Performance Data

d	25 mm	Bore diameter
L	108 mm	Length total
H ₂	56,5 mm	Height
C _{0r G}	1.800 N	Load carrying capacity (housing)
C _r	14.000 N	Basic dynamic load rating, radial
C _{0r}	7.800 N	Basic static load rating, radial
≈m	0,25 kg	Weight

Mounting dimensions

J	86 mm	Distance fixing bore
N	11,5 mm	Fixing bore

Dimensions

H	28,6 mm	Distance shaft axis
A	31,8 mm	Width (base)
A ₁	23,5 mm	Width (head)
H ₁	4 mm	Height (base)



Additional information

f_0	13,8	Calculation factor
	GEH52-BT	Housing
	AY25-XL-NPP-B	Bearing designation

Temperature range

T_{min}	-20 °C	Operating temperature min.
T_{max}	120 °C	Operating temperature max.