

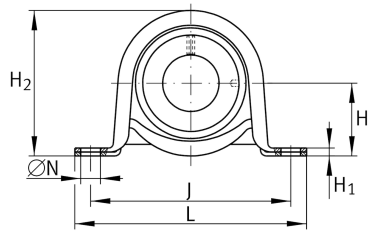
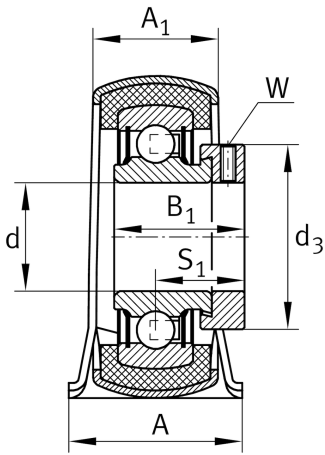
**RPB20-XL**

## Plummer block housing unit

Plummer block housing units RPB, sheet steel housing, radial insert ball bearing with eccentric locking collar and rubber interliner, P seals

X-life

## Technical information



## Your current product variant

Material	Steel sheet
----------	-------------

## Main Dimensions &amp; Performance Data

d	20 mm	Bore diameter
L	108 mm	Length total
H <sub>2</sub>	56,5 mm	Height
C <sub>0r G</sub>	1.100 N	Load carrying capacity (housing)
C <sub>r</sub>	13.600 N	Basic dynamic load rating, radial
C <sub>0r</sub>	6.600 N	Basic static load rating, radial
≈m	0,37 kg	Weight

## Mounting dimensions

J	86 mm	Distance fixing bore
N	11,5 mm	Fixing bore

## Dimensions

H	28,6 mm	Distance shaft axis
A	31,8 mm	Width (base)
A <sub>1</sub>	23,5 mm	Width (head)
H <sub>1</sub>	4 mm	Height (base)



### Additional information

f <sub>0</sub>	13,1	Calculation factor
	GEH52-BT	Housing
	GRG.RABR47/52-AH01	Rubber interliner designation
	RAE20-XL-NPP-B	Bearing designation

### Temperature range

T <sub>min</sub>	-20 °C	Operating temperature min.
T <sub>max</sub>	120 °C	Operating temperature max.