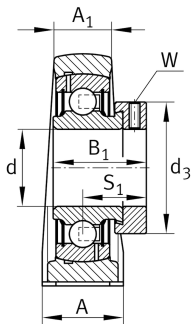
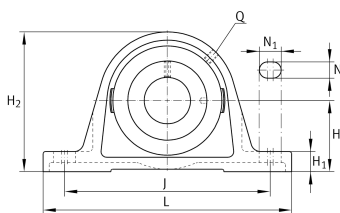


**PASE20-TV-FA125.5**

Plummer block housing unit

Plummer block housing unit PASE...-TV, RIBB plastic

## Technical information



## Your current product variant

Special material	TV	Plastic housing
Material	TV	Plastic
Manufacturing instruction	FA125.5	Bearing with Corrotect coating

## Main Dimensions &amp; Performance Data

d	20 mm	Bore diameter
L	127 mm	Length
H <sub>2</sub>	65,5 mm	Height
≈m	0,32 kg	Weight

## Mounting dimensions

J	95 mm	Distance fixing bore
N	11 mm	Width (slot)
N <sub>1</sub>	14 mm	Length (slot)

## Dimensions

H	33,3 mm	Distance shaft axis
A	38 mm	Width (base)
H <sub>1</sub>	14,2 mm	Height (base)
B <sub>1</sub>	31 mm	Locking collar total width
S	23,5 mm	Distance raceway
Q	1/4 - 28 UNF	Connection thread for lubrication



### Additional information

---

GEH-ASE04-TV	Housing
GRAE20-NPP-B-FA107/125.5	Bearing designation
KASK04-S-G	End cap

### Temperature range

---

T <sub>min</sub>	-35 °C	Operating temperature min.
T <sub>max</sub>	100 °C	Operating temperature max.