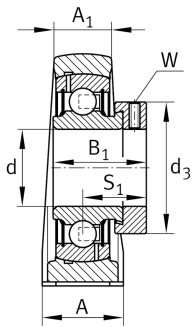
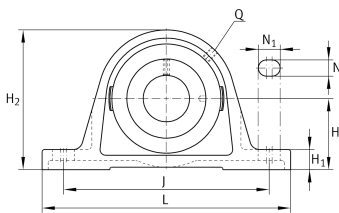


**PASE25-TV-FA125.5**

Plummer block housing unit

Plummer block housing unit PASE...-TV, RIBB plastic

Technical information



Your current product variant

Special material	TV	Plastic housing
Material	TV	Plastic
Manufacturing instruction	FA125.5	Bearing with Corrotect coating

Main Dimensions & Performance Data

d	25 mm	Bore diameter
L	140,5 mm	Length
H ₂	71 mm	Height
≈m	0,37 kg	Weight

Mounting dimensions

J	105 mm	Distance fixing bore
N	11 mm	Width (slot)
N ₁	14 mm	Length (slot)

Dimensions

H	36,5 mm	Distance shaft axis
A	38 mm	Width (base)
H ₁	14,5 mm	Height (base)
B ₁	31 mm	Locking collar total width
S	23,5 mm	Distance raceway
Q	1/4 - 28 UNF	Connection thread for lubrication



Additional information

GEH-ASE05-TV	Housing
GRAE25-NPP-B-FA107/125.5	Bearing designation
KASK05-S-G	End cap
KASK05-S-R-NBR	Open protecting cap

Temperature range

T _{min}	-35 °C	Operating temperature min.
T _{max}	100 °C	Operating temperature max.