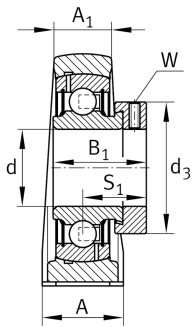
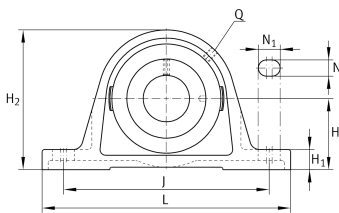


**PASE30-TV-FA125.5**

Plummer block housing unit

Plummer block housing unit PASE...-TV, RIBB plastic

## Technical information



## Your current product variant

Special material	TV	Plastic housing
Material	TV	Plastic
Manufacturing instruction	FA125.5	Bearing with Corrotect coating

## Main Dimensions &amp; Performance Data

d	30 mm	Bore diameter
L	163 mm	Length
H <sub>2</sub>	84 mm	Height
≈m	0,6 kg	Weight

## Mounting dimensions

J	119 mm	Distance fixing bore
N	14 mm	Width (slot)
N <sub>1</sub>	18 mm	Length (slot)

## Dimensions

H	42,9 mm	Distance shaft axis
A	46 mm	Width (base)
H <sub>1</sub>	17,8 mm	Height (base)
B <sub>1</sub>	35,8 mm	Locking collar total width
S	26,8 mm	Distance raceway
Q	1/4 - 28 UNF	Connection thread for lubrication



### Additional information

GEH-ASE06-TV	Housing
GRAE30-NPP-B-FA107/125.5	Bearing designation
KASK06-S-G	End cap
KASK06-S-R-NBR	Open protecting cap

### Temperature range

T <sub>min</sub>	-35 °C	Operating temperature min.
T <sub>max</sub>	100 °C	Operating temperature max.