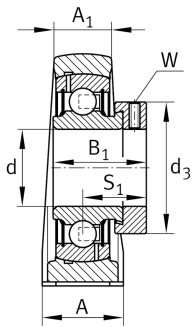
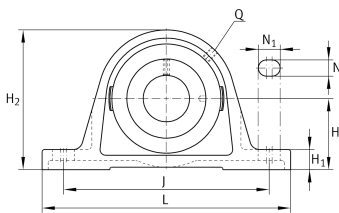


**PASE35-TV-FA125.5**

Plummer block housing unit

Plummer block housing unit PASE...-TV, RIBB plastic

Technical information



Your current product variant

Special material	TV	Plastic housing
Material	TV	Plastic
Manufacturing instruction	FA125.5	Bearing with Corrotect coating

Main Dimensions & Performance Data

d	35 mm	Bore diameter
L	168 mm	Length
H ₂	94,5 mm	Height
≈m	0,82 kg	Weight

Mounting dimensions

J	127 mm	Distance fixing bore
N	14 mm	Width (slot)
N ₁	18 mm	Length (slot)

Dimensions

H	47,6 mm	Distance shaft axis
A	48 mm	Width (base)
H ₁	18 mm	Height (base)
B ₁	39 mm	Locking collar total width
S	29,5 mm	Distance raceway
Q	1/4 - 28 UNF	Connection thread for lubrication



Additional information

GEH-ASE07-TV	Housing
GRAE35-NPP-B-FA107/125.5	Bearing designation
KASK07-S-G	End cap
KASK07-S-R-NBR	Open protecting cap

Temperature range

T _{min}	-35 °C	Operating temperature min.
T _{max}	100 °C	Operating temperature max.