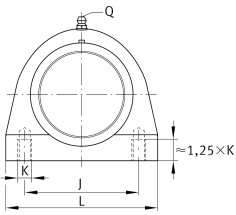


**PSHE25-TV-FA125.5**

Plummer block housing unit

Plummer block housing unit PSHE..-TV, RIBB plastic

Technical information

**Your current product variant**

Special material	TV	Plastic housing
Material	TV	Plastic
Manufacturing instruction	FA125.5	Bearing with Corrotect coating

Main Dimensions & Performance Data

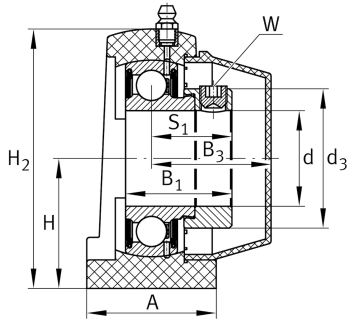
d	25 mm	Bore diameter
L	76,2 mm	Length
H ₂	73,5 mm	Height
≈m	0,35 kg	Weight

Mounting dimensions

J	50,8 mm	Distance fixing bore
---	---------	----------------------

Dimensions

H	36,5 mm	Distance shaft axis
A	39,5 mm	Width (base)
B ₁	31 mm	Locking collar total width
S	23,5 mm	Distance raceway
Q	1/4 - 28 UNF	Connection thread for lubrication





Additional information

GEH-SHE05-TV	Housing
GRAE25-NPP-B-FA107/125.5	Bearing designation
KASK05-S-G	End cap
KASK05-S-R-NBR	Open protecting cap

Temperature range

T _{min}	-35 °C	Operating temperature min.
T _{max}	100 °C	Operating temperature max.