

**FAG****VRE308-A**

Plummer block housing unit

Plummer block housing, consisting of housing body VR, shaft VRW and two bearings

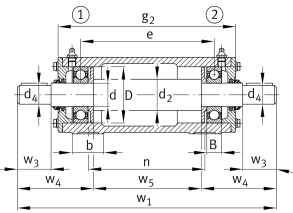
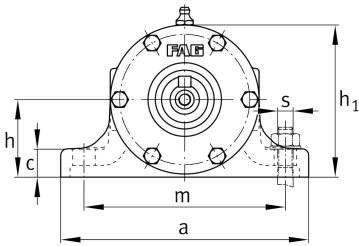
Technical information

Main Dimensions & Performance Data

d	40 mm	Shaft diameter
a	190 mm	Length base
h ₁	118 mm	Height
g ₂	317 mm	Total width with cover
≈m	18 kg	Weight

Dimensions

B	23 mm	Width
b	52 mm	Width base
c	20 mm	Height base
D	90 mm	Outside diameter bearing
d ₂	50 mm	Shaft diameter shoulder
d ₄	32 mm	Shaft diameter outside
e	257 mm	Locking collar width
h	60 mm	Center height
m	150 mm	Distance fixing bore
n	225 mm	Bore distance width
s	M12	Size of fixing screws
w ₁	501 mm	Length shaft total
w ₃	80 mm	Length shaft tap
w ₄	143,5 mm	Length shaft end
w ₅	214 mm	Length shaft shoulder





Additional information

VRW308-A	Suitable shaft
6308-C3	Bearing designation
6308-C3	Reference bearing designation
VR308-A	Housing