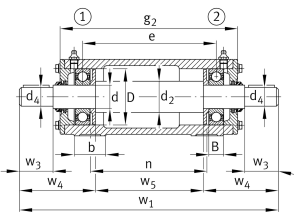
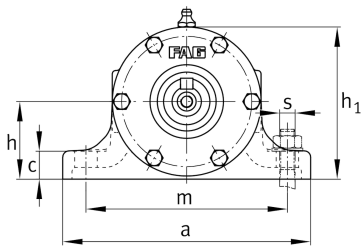


**FAG****VRE309-A**

Plummer block housing unit

Plummer block housing, consisting of housing body VR, shaft VRW and two bearings

Technical information

**Main Dimensions & Performance Data**

d	45 mm	Shaft diameter
a	210 mm	Length base
h ₁	135 mm	Height
g ₂	343 mm	Total width with cover
≈m	24,3 kg	Weight

Dimensions

B	25 mm	Width
b	52 mm	Width base
c	22 mm	Height base
D	100 mm	Outside diameter bearing
d ₂	55 mm	Shaft diameter shoulder
d ₄	38 mm	Shaft diameter outside
e	281 mm	Locking collar width
h	70 mm	Center height
m	170 mm	Distance fixing bore
n	250 mm	Bore distance width
s	M12	Size of fixing screws
w ₁	527 mm	Length shaft total
w ₃	80 mm	Length shaft tap
w ₄	145,5 mm	Length shaft end
w ₅	236 mm	Length shaft shoulder



Additional information

VRW309-A	Suitable shaft
6309-C3	Bearing designation
6309-C3	Reference bearing designation
VR309-A	Housing