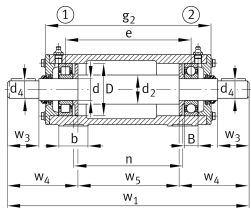
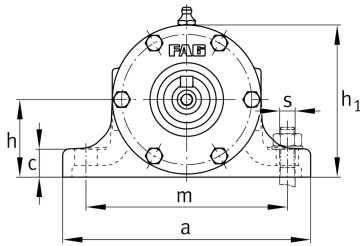


**FAG****VRE309-B**

## Plummer block housing unit

Plummer block housing, consisting of housing body VR, shaft VRW and two bearings

## Technical information

**Main Dimensions & Performance Data**

d	45 mm	Shaft diameter
a	210 mm	Length base
h <sub>1</sub>	135 mm	Height
g <sub>2</sub>	343 mm	Total width with cover
≈m	24,3 kg	Weight

**Dimensions**

B	25 mm	Width
b	52 mm	Width base
c	22 mm	Height base
D	100 mm	Outside diameter bearing
d <sub>2</sub>	55 mm	Shaft diameter shoulder
d <sub>4</sub>	38 mm	Shaft diameter outside
e	282 mm	Locking collar width
h	70 mm	Center height
m	170 mm	Distance fixing bore
n	250 mm	Bore distance width
s	M12	Size of fixing screws
w <sub>1</sub>	527 mm	Length shaft total
w <sub>3</sub>	80 mm	Length shaft tap
w <sub>4</sub>	145,5 mm	Length shaft end
w <sub>5</sub>	236 mm	Length shaft shoulder



### Additional information

---

VRW309-A	Suitable shaft
NJ309-E-TVP2	Bearing designation
6309-C3	Reference bearing designation
VR309-A	Housing