



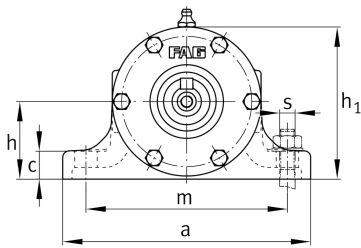
**FAG**

### VRE314-D [↗](#)

Plummer block housing unit

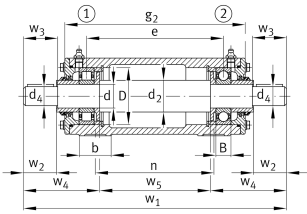
Plummer block housing, consisting of housing body VR, shaft VRW and two bearings

## Technical information



### Main Dimensions & Performance Data

d	70 mm	Shaft diameter
a	290 mm	Length base
h <sub>1</sub>	188 mm	Height
g <sub>2</sub>	500 mm	Total width with cover
≈m	73,6 kg	Weight



## Dimensions

B	35 mm	Width
b	70 mm	Width base
c	25 mm	Height base
D	150 mm	Outside diameter bearing
d <sub>2</sub>	80 mm	Shaft diameter shoulder
d <sub>4</sub>	60 mm	Shaft diameter outside
e	423 mm	Locking collar width
h	95 mm	Center height
m	230 mm	Distance fixing bore
n	380 mm	Bore distance width
s	M16	Size of fixing screws
w <sub>1</sub>	811 mm	Length shaft total
w <sub>2</sub>	140 mm	Distance shaft end
w <sub>3</sub>	143 mm	Length shaft tap
w <sub>4</sub>	222,5 mm	Length shaft end
w <sub>5</sub>	366 mm	Length shaft shoulder

## Additional information

VRW314-D	Suitable shaft
NU314-E-TVP2-C3	Bearing designation
6314-C3	Reference bearing designation
VR314-D	Housing