

**FAG****VRE318-B**

Plummer block housing unit

Plummer block housing, consisting of housing body VR, shaft VRW and two bearings

Technical information

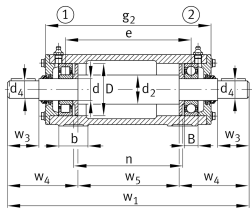
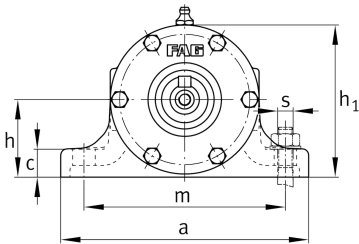
Main Dimensions & Performance Data

d	90 mm	Shaft diameter
a	350 mm	Length base
h ₁	227 mm	Height
g ₂	600 mm	Total width with cover

≈m	129 kg	Weight
----	--------	--------

Dimensions

B	43 mm	Width
b	85 mm	Width base
c	30 mm	Height base
D	190 mm	Outside diameter bearing
d ₂	105 mm	Shaft diameter shoulder
d ₄	80 mm	Shaft diameter outside
e	511 mm	Locking collar width
h	112 mm	Center height
m	290 mm	Distance fixing bore
n	460 mm	Bore distance width
s	M16	Size of fixing screws
w ₁	971 mm	Length shaft total
w ₃	170 mm	Length shaft tap
w ₄	263 mm	Length shaft end
w ₅	445 mm	Length shaft shoulder





Additional information

VRW318-A	Suitable shaft
NJ318-E-TVP2	Bearing designation
6318-C3	Reference bearing designation
VR318-A	Housing