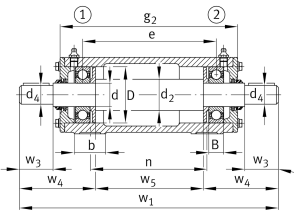
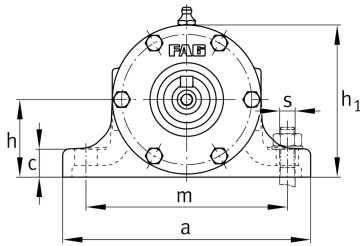


**FAG****VRE319-A**

## Plummer block housing unit

Plummer block housing, consisting of housing body VR, shaft VRW and two bearings

## Technical information

**Main Dimensions & Performance Data**

d	95 mm	Shaft diameter
a	400 mm	Length base
h <sub>1</sub>	248 mm	Height
g <sub>2</sub>	633 mm	Total width with cover
≈m	151,5 kg	Weight

**Dimensions**

B	45 mm	Width
b	90 mm	Width base
c	35 mm	Height base
D	200 mm	Outside diameter bearing
d <sub>2</sub>	110 mm	Shaft diameter shoulder
d <sub>4</sub>	85 mm	Shaft diameter outside
e	540 mm	Locking collar width
h	125 mm	Center height
m	320 mm	Distance fixing bore
n	480 mm	Bore distance width
s	M20	Size of fixing screws
w <sub>1</sub>	1.004 mm	Length shaft total
w <sub>3</sub>	170 mm	Length shaft tap
w <sub>4</sub>	267,5 mm	Length shaft end
w <sub>5</sub>	469 mm	Length shaft shoulder



View product details on medias

08.07.2026, 22:11:39 UTC

SCHAEFFLER

### Additional information

---

VRW319-A	Suitable shaft
6319-C3	Bearing designation
6319-C3	Reference bearing designation
VR319-A	Housing