

**FAG****VRE320-A**

## Plummer block housing unit

Plummer block housing, consisting of housing body VR, shaft VRW and two bearings

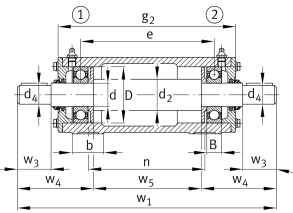
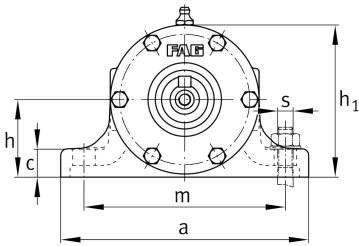
## Technical information

**Main Dimensions & Performance Data**

d	100 mm	Shaft diameter
a	400 mm	Length base
h <sub>1</sub>	260 mm	Height
g <sub>2</sub>	665 mm	Total width with cover
≈m	177 kg	Weight

**Dimensions**

B	47 mm	Width
b	95 mm	Width base
c	40 mm	Height base
D	215 mm	Outside diameter bearing
d <sub>2</sub>	120 mm	Shaft diameter shoulder
d <sub>4</sub>	90 mm	Shaft diameter outside
e	570 mm	Locking collar width
h	130 mm	Center height
m	320 mm	Distance fixing bore
n	500 mm	Bore distance width
s	M20	Size of fixing screws
w <sub>1</sub>	1.036 mm	Length shaft total
w <sub>3</sub>	170 mm	Length shaft tap
w <sub>4</sub>	268 mm	Length shaft end
w <sub>5</sub>	500 mm	Length shaft shoulder





### Additional information

---

VRW320-A	Suitable shaft
6320-C3	Bearing designation
6320-C3	Reference bearing designation
VR320-A	Housing