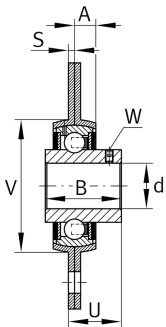
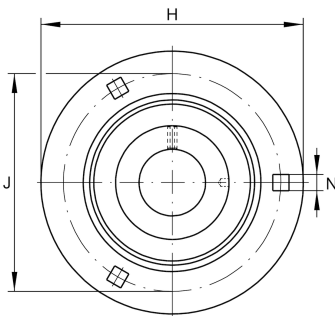


**RRY30-VA**

## Flanged housing unit

Housing units RRY..-VA, three/four-bolt flanged housing units, sheet steel, grub screws in inner ring, R seals, with anti-corrosion protection, without relubrication facility

## Technical information

**Your current product variant**

|                  |    |                               |
|------------------|----|-------------------------------|
| Material         | VA | Stainless Steel               |
| Special material | VA | Corrosion-resistant VA design |

**Main Dimensions & Performance Data**

|                  |          |                                   |
|------------------|----------|-----------------------------------|
| d                | 30 mm    | Bore diameter                     |
| H                | 112,7 mm | Height flange                     |
| U                | 24,7 mm  | Total height unit                 |
| C <sub>r</sub>   | 18.700 N | Basic dynamic load rating, radial |
| C <sub>0r</sub>  | 10.700 N | Basic static load rating, radial  |
| C <sub>ur</sub>  | 530 N    | Fatigue load limit, radial        |
| C <sub>0rG</sub> | 5.000 N  | Load carrying capacity (housing)  |
| ≈m               | 0,6 kg   | Weight                            |

**Mounting dimensions**

|   |         |                               |
|---|---------|-------------------------------|
| J | 90,5 mm | Pitch circle diameter (holes) |
| N | 10,5 mm | Fixing square                 |
| n | 3       | Number of screwing holes      |



### Dimensions

|   |         |                           |
|---|---------|---------------------------|
| A | 9 mm    | Height housing            |
| B | 38,1 mm | Width                     |
| S | 2,5 mm  | Thickness of flange       |
| V | 71 mm   | Shoulder diameter housing |

### Additional information

|                |                     |
|----------------|---------------------|
| 2              | Number of housings  |
| FLAN62-MSB-VA  | Housing             |
| GYE30-KRR-B-VA | Bearing designation |

### Temperature range

|                  |        |                            |
|------------------|--------|----------------------------|
| T <sub>min</sub> | -35 °C | Operating temperature min. |
| T <sub>max</sub> | 100 °C | Operating temperature max. |