

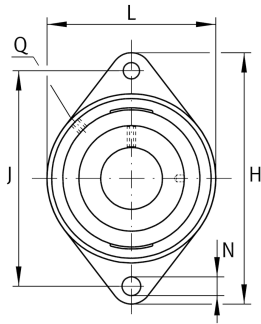
**LCJT30-XL-N**

## Flanged housing unit

Housing units LCJT, two-bolt flanged housing units, cast iron, eccentric locking collar, L seals, for temperatures from -40°C to +180°C

X-life

## Technical information



## Your current product variant

Groove	N	Cast iron housing with undercut slot for end caps
Material	GG	Grey cast iron

## Main Dimensions &amp; Performance Data

d	30 mm	Bore diameter
L	80 mm	Flange width
H	142 mm	Height flange
U	50,2 mm	Total height unit
C <sub>r</sub>	20.700 N	Basic dynamic load rating, radial
C <sub>0r</sub>	11.300 N	Basic static load rating, radial
C <sub>ur</sub>	480 N	Fatigue load limit, radial
≈m	0,9 kg	Weight

## Mounting dimensions

J	116,5 mm	Distance fixing bore
N	11,5 mm	Fixing bore
n	2	Number of screwing holes
W	4 mm	Width of flats



### Dimensions

A	31 mm	Height housing
A <sub>1</sub>	12 mm	Thickness of flange
A <sub>2</sub>	20 mm	Distance raceway
B <sub>1</sub>	48,5 mm	Locking collar total width
V	80 mm	Shoulder diameter housing
Q	M6	Connection thread for lubrication
d <sub>3</sub>	44 mm	Outside diameter locking collar

### Additional information

CJT06-FA125	Housing
GE30-XL-KLL-B	Bearing designation
KASK06	Protecting cap

### Temperature range

T <sub>min</sub>	-40 °C	Operating temperature min.
T <sub>max</sub>	180 °C	Operating temperature max.