

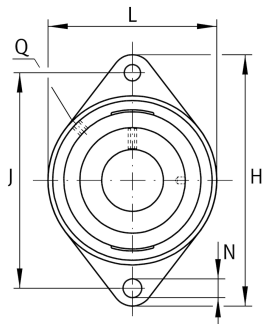
**RCJT65-214-XL**

## Flanged housing unit

Housing units RCJT, two-bolt flanged housing units, cast iron, eccentric locking collar, R seals

X-life

## Technical information



## Your current product variant

Material	GG	Grey cast iron
----------	----	----------------

## Main Dimensions &amp; Performance Data

d	65 mm	Bore diameter
L	160 mm	Flange width
H	258 mm	Height flange
U	82,6 mm	Total height unit
C <sub>r</sub>	62.000 N	Basic dynamic load rating, radial
C <sub>0r</sub>	44.000 N	Basic static load rating, radial
C <sub>ur</sub>	2.090 N	Fatigue load limit, radial
≈m	5,626 kg	Weight

## Mounting dimensions

J	216 mm	Distance fixing bore
N	21 mm	Fixing bore
n	2	Number of screwing holes



### Dimensions

A	57 mm	Height housing
A <sub>1</sub>	18 mm	Thickness of flange
A <sub>2</sub>	38 mm	Distance raceway
V	160 mm	Shoulder diameter housing
Q	M6	Connection thread for lubrication
d <sub>3</sub>	96 mm	Outside diameter locking collar

### Additional information

1	Number of housings
CJT13/14	Housing
GE65-214-XL-KRR-B	Bearing designation

### Temperature range

T <sub>min</sub>	-20 °C	Operating temperature min.
T <sub>max</sub>	120 °C	Operating temperature max.