

**TCJT25-XL-N**

## Flanged housing unit

Housing units TCJT, two-bolt flanged housing units, cast iron, eccentric locking collar, T seals

X-life

## Technical information

## Your current product variant

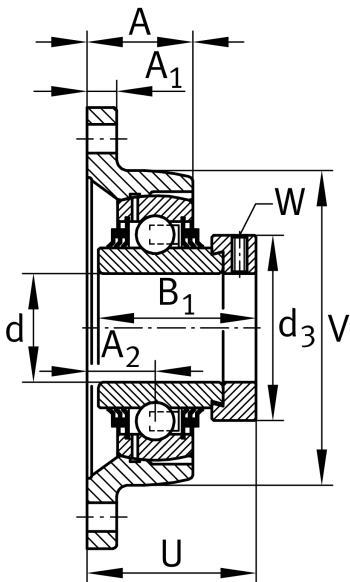
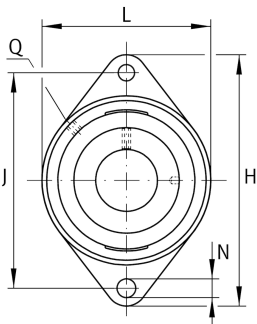
|          |    |   |
|----------|----|---|
| Groove   | N  | Cast iron housing with undercut slot for end caps |
| Material | GG | Grey cast iron                                    |

## Main Dimensions &amp; Performance Data

|             |          |                                   |
|-------------|----------|-----------------------------------|
| d           | 25 mm    | Bore diameter                     |
| L           | 70 mm    | Flange width                      |
| H           | 124 mm   | Height flange                     |
| U           | 46 mm    | Total height unit                 |
| $C_r$       | 14.000 N | Basic dynamic load rating, radial |
| $C_{0r}$    | 7.800 N  | Basic static load rating, radial  |
| $C_{ur}$    | 370 N    | Fatigue load limit, radial        |
| $\approx m$ | 0,64 kg  | Weight                            |

## Mounting dimensions

|   |         |                          |
|---|---------|--------------------------|
| J | 99 mm   | Distance fixing bore     |
| N | 11,5 mm | Fixing bore              |
| n | 2       | Number of screwing holes |
| W | 3 mm    | Width of flats           |





### Dimensions

|                |         |                                   |
|----------------|---------|-----------------------------------|
| A              | 28,5 mm | Height housing                    |
| A <sub>1</sub> | 11 mm   | Thickness of flange               |
| A <sub>2</sub> | 19 mm   | Distance raceway                  |
| B <sub>1</sub> | 44,5 mm | Locking collar total width        |
| V              | 70 mm   | Shoulder diameter housing         |
| Q              | M6      | Connection thread for lubrication |
| d <sub>3</sub> | 37,5 mm | Outside diameter locking collar   |

### Additional information

|               |                     |
|---------------|---------------------|
| GEHCJT05-GG-N | Housing             |
| GE25-XL-KTT-B | Bearing designation |
| KASK05        | Protecting cap      |

### Temperature range

|                  |        |                            |
|------------------|--------|----------------------------|
| T <sub>min</sub> | -20 °C | Operating temperature min. |
| T <sub>max</sub> | 100 °C | Operating temperature max. |