

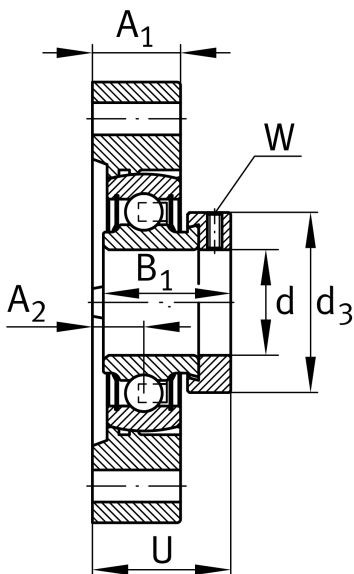
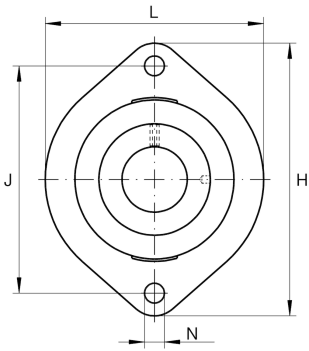
**FLCTE17-XL**

## Flanged housing unit

Housing units FLCTE, two-bolt flanged housing units, cast iron, eccentric locking collar, P seals, without relubrication facility

X-life

## Technical information



## Your current product variant

Material	GG	Grey cast iron
----------	----	----------------

## Main Dimensions &amp; Performance Data

d	17 mm	Bore diameter
L	58,7 mm	Flange width
H	81 mm	Height flange
U	30,5 mm	Total height unit
C <sub>r</sub>	10.100 N	Basic dynamic load rating, radial
C <sub>0r</sub>	4.750 N	Basic static load rating, radial
C <sub>ur</sub>	248 N	Fatigue load limit, radial
≈m	0,3 kg	Weight

## Mounting dimensions

J	63,5 mm	Distance fixing bore
N	6,6 mm	Fixing bore
W	3 mm	Width across flats
n	2	Number of screwing holes



### Dimensions

A <sub>1</sub>	15 mm	Thickness of flange
A <sub>2</sub>	8,4 mm	Distance raceway
B <sub>1</sub>	28,6 mm	Locking collar total width
d <sub>3</sub>	28,4 mm	Outside diameter eccentric locking collar

### Additional information

1	Number of housings
LCTE03	Housing
RAE17-XL-NPP-B	Bearing designation

### Temperature range

T <sub>min</sub>	-20 °C	Operating temperature min.
T <sub>max</sub>	120 °C	Operating temperature max.