

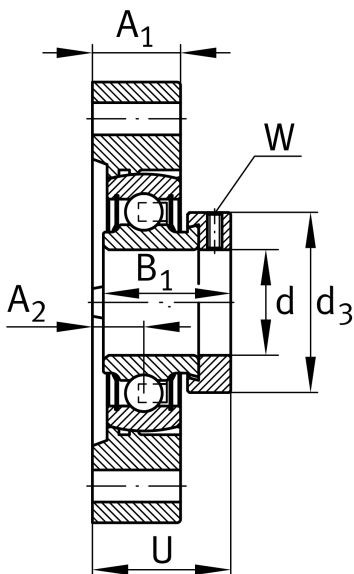
**FLCTE20-XL**

Flanged housing unit

Housing units FLCTE, two-bolt flanged housing units, cast iron, eccentric locking collar, P seals, without relubrication facility

X-life

Technical information



Your current product variant

Material	GG	Grey cast iron
----------	----	----------------

Main Dimensions & Performance Data

d	20 mm	Bore diameter
L	66,5 mm	Flange width
H	90,5 mm	Height flange
U	33 mm	Total height unit
C _r	13.600 N	Basic dynamic load rating, radial
C _{0r}	6.600 N	Basic static load rating, radial
C _{ur}	345 N	Fatigue load limit, radial
≈m	0,414 kg	Weight

Mounting dimensions

J	71,4 mm	Distance fixing bore
N	9 mm	Fixing bore
W	3 mm	Width across flats
n	2	Number of screwing holes



Dimensions

A ₁	17 mm	Thickness of flange
A ₂	9,5 mm	Distance raceway
B ₁	31 mm	Locking collar total width
d ₃	33 mm	Outside diameter eccentric locking collar

Additional information

1	Number of housings
LCTE04	Housing
RAE20-XL-NPP-B	Bearing designation

Temperature range

T _{min}	-20 °C	Operating temperature min.
T _{max}	120 °C	Operating temperature max.