

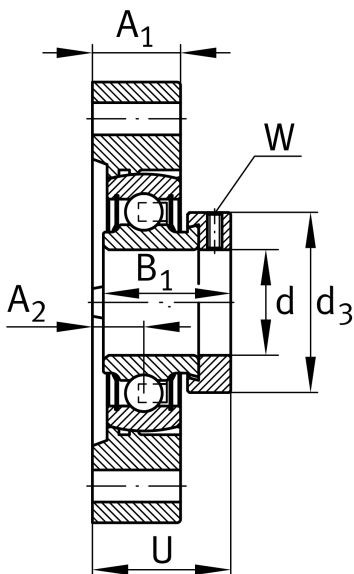
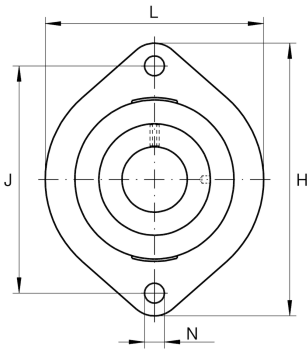
**FLCTE35-XL**

Flanged housing unit

Housing units FLCTE, two-bolt flanged housing units, cast iron, eccentric locking collar, P seals, without relubrication facility

X-life

Technical information



Your current product variant

Material	GG	Grey cast iron
----------	----	----------------

Main Dimensions & Performance Data

d	35 mm	Bore diameter
L	94 mm	Flange width
H	126 mm	Height flange
U	42 mm	Total height unit
C_r	27.500 N	Basic dynamic load rating, radial
C_{0r}	15.300 N	Basic static load rating, radial
C_{ur}	650 N	Fatigue load limit, radial
$\approx m$	1,02 kg	Weight

Mounting dimensions

J	100 mm	Distance fixing bore
N	11,5 mm	Fixing bore
W	5 mm	Width across flats
n	2	Number of screwing holes



Dimensions

A ₁	22 mm	Thickness of flange
A ₂	12,4 mm	Distance raceway
B ₁	39 mm	Locking collar total width
d ₃	55 mm	Outside diameter eccentric locking collar

Additional information

1	Number of housings
LCTE07	Housing
RAE35-XL-NPP-B	Bearing designation

Temperature range

T _{min}	-20 °C	Operating temperature min.
T _{max}	120 °C	Operating temperature max.