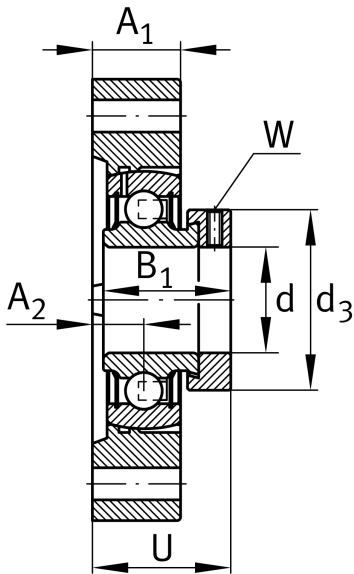
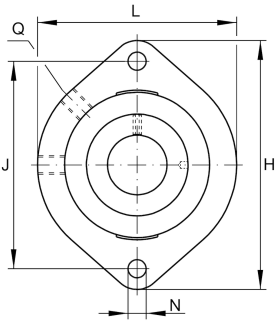


**GLCTE25-N**

Flanged housing unit

Flanged housing unit GLCTE

## Technical information

**Your current product variant**

Groove	N	Cast iron housing with undercut slot for end caps
Material	GG	Grey cast iron

**Main Dimensions & Performance Data**

d	25 mm	Bore diameter
L	71 mm	Flange width
H	97 mm	Height flange
U	33,4 mm	Total height unit
C <sub>r</sub>	14.000 N	Basic dynamic load rating, radial
C <sub>0r</sub>	7.800 N	Basic static load rating, radial
C <sub>ur</sub>	370 N	Fatigue load limit, radial
≈m	0,46 kg	Weight

**Mounting dimensions**

J	76,2 mm	Distance fixing bore
N	9 mm	Fixing bore
W	3 mm	Width across flats
n	2	Number of screwing holes



### Dimensions

A <sub>1</sub>	19,5 mm	Thickness of flange
A <sub>2</sub>	9,9 mm	Distance raceway
B <sub>1</sub>	31 mm	Locking collar total width
Q	M6	Connection thread for lubrication
d <sub>3</sub>	37,5 mm	Outside diameter eccentric locking collar

### Additional information

1	Number of housings
GEHGLCTE05-GG-N	Housing
GRAE25-XL-NPP-B	Bearing designation

### Temperature range

T <sub>min</sub>	-20 °C	Operating temperature min.
T <sub>max</sub>	100 °C	Operating temperature max.