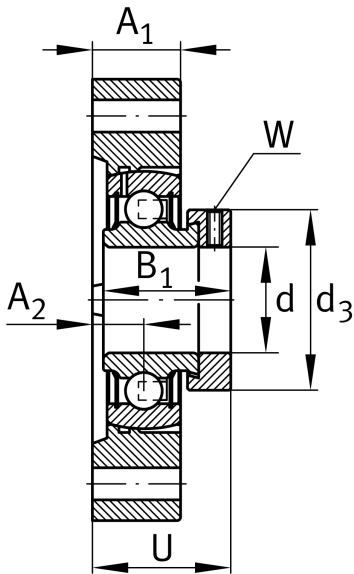
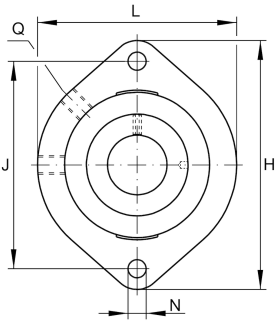


**GLCTE30-N**

Flanged housing unit

Flanged housing unit GLCTE...-N

Technical information

**Your current product variant**

Groove	N	Cast iron housing with undercut slot for end caps
Material	GG	Grey cast iron

Main Dimensions & Performance Data

d	30 mm	Bore diameter
L	84 mm	Flange width
H	112,5 mm	Height flange
U	38,2 mm	Total height unit
C _r	20.700 N	Basic dynamic load rating, radial
C _{0r}	11.300 N	Basic static load rating, radial
C _{ur}	480 N	Fatigue load limit, radial
≈m	0,75 kg	Weight

Mounting dimensions

J	90,5 mm	Distance fixing bore
N	11,5 mm	Fixing bore
W	4 mm	Width across flats
n	2	Number of screwing holes



Dimensions

A ₁	22,5 mm	Thickness of flange
A ₂	11,4 mm	Distance raceway
B ₁	35,8 mm	Locking collar total width
Q	M6	Connection thread for lubrication
d ₃	44 mm	Outside diameter eccentric locking collar

Additional information

GEHGLCTE06-GG-N	Housing
GRAE30-XL-NPP-B	Bearing designation

Temperature range

T _{min}	-20 °C	Operating temperature min.
T _{max}	100 °C	Operating temperature max.