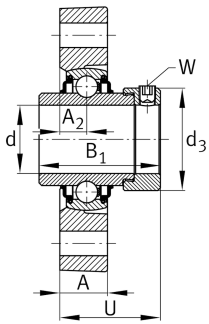
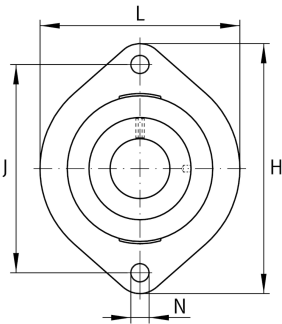


**RLCTE25**

Flanged housing unit

Flanged housing unit RLCTE

Technical information

**Your current product variant**

Material	GG	Grey cast iron
----------	----	----------------

Main Dimensions & Performance Data

d	25 mm	Bore diameter
L	71 mm	Flange width
H	97 mm	Height flange
U	36,9 mm	Total height unit
C _r	14.000 N	Basic dynamic load rating, radial
C _{0r}	7.800 N	Basic static load rating, radial
C _{ur}	410 N	Fatigue load limit, radial
≈m	0,52 kg	Weight

Mounting dimensions

J	76,2 mm	Distance fixing bore
N	9 mm	Fixing bore
W	3 mm	Width across flats
n	2	Number of screwing holes

Dimensions

A	19,5 mm	Thickness of flange
A ₂	9,9 mm	Distance raceway
B ₁	44,5 mm	Locking collar total width
d ₃	37,5 mm	Outside diameter eccentric locking collar



Additional information

1	Number of housings
LCTE05-E	Housing
E25-XL-KRR-B	Bearing designation

Temperature range

T _{min}	-20 °C	Operating temperature min.
T _{max}	100 °C	Operating temperature max.