

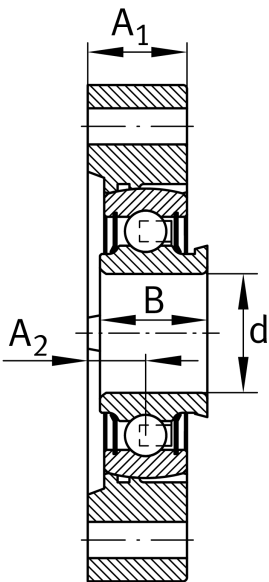
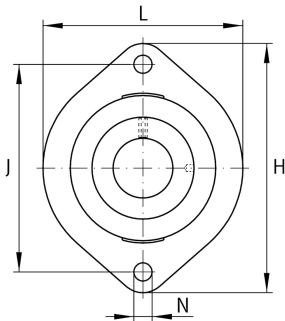
IMAGE
COMING SOON**FLCTE40-XL-FA107-OSE**

Flanged housing unit

Flanged housing unit FLCTE...-XL-FA107-
OSE

X-life

Technical information

**Your current product variant**

Material	GG	Grey cast iron
Without locking device	OSE	Bearing without locking element

Main Dimensions & Performance Data

d	40 mm	Bore diameter
L	100 mm	Flange width
H	150 mm	Height flange
U	31,7 mm	Total height unit
C _r	32.500 N	Basic dynamic load rating, radial
C _{0r}	19.800 N	Basic static load rating, radial
≈m	1,15 kg	Weight

Mounting dimensions

J	119 mm	Distance fixing bore
N	14 mm	Fixing bore
n	2	Number of screwing holes

Dimensions

A ₁	26 mm	Thickness of flange
A ₂	13,5 mm	Distance raceway
B	30,2 mm	Width



Additional information

1	Number of housings
GEHLCTE08-GG	Housing
RAE40-XL-NPP-B	Bearing designation

Temperature range

T _{min}	-20 °C	Operating temperature min.
T _{max}	100 °C	Operating temperature max.