

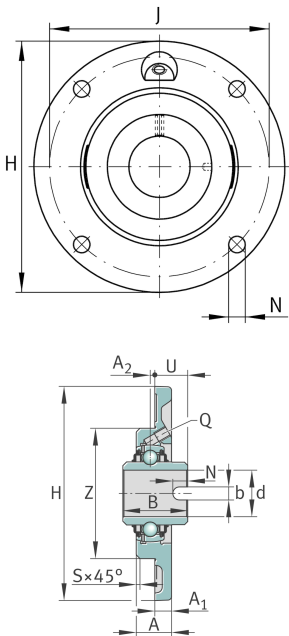
**RMEL25-XL-N**

Flanged housing unit

Flanged housing unit RMEL..-XL-N

X-life

Technical information

**Your current product variant**

Groove	N	Cast iron housing with undercut slot for end caps
Material	GG	Grey cast iron

Main Dimensions & Performance Data

d	25 mm	Bore diameter
H	115 mm	Height flange
U	34,9 mm	Total height unit
C _r	14.900 N	Basic dynamic load rating, radial
C _{0r}	7.800 N	Basic static load rating, radial
C _{ur}	395 N	Fatigue load limit, radial
m	0,74 kg	Weight

Mounting dimensions

J	90 mm	Pitch circle diameter (holes)
N	9 mm	Fixing bore
Z	70 mm	Diameter spigot
n	4	Number of screwing holes



Dimensions

A	19 mm	Height housing
A ₁	9 mm	Thickness of flange
A ₂	2,5 mm	Distance raceway
B	34,9 mm	Width
Q	M6	Connection thread for lubrication

Additional information

1	Number of housings
ME05-N	Housing
GLE25-XL-KRR-B	Bearing designation

Temperature range

T _{min}	-40 °C	Operating temperature min.
T _{max}	180 °C	Operating temperature max.