

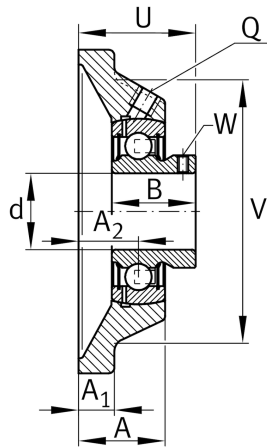
**PCJY15-XL**

## Flanged housing unit

Housing units PCJY, four-bolt flanged housing units, cast iron, grub screws in inner ring, P seals

X-life

## Technical information



## Your current product variant

Material	GG	Grey cast iron
----------	----	----------------

## Main Dimensions &amp; Performance Data

d	15 mm	Bore diameter
L	76 mm	Flange width
U	33 mm	Total height unit
C <sub>r</sub>	10.100 N	Basic dynamic load rating, radial
C <sub>0r</sub>	4.750 N	Basic static load rating, radial
C <sub>ur</sub>	202 N	Fatigue load limit, radial
≈m	0,44 kg	Weight

## Mounting dimensions

J	54 mm	Distance fixing bore
N	11,5 mm	Fixing bore
n	4	Number of screwing holes



### Dimensions

A	27 mm	Height housing
A <sub>1</sub>	9,5 mm	Thickness of flange
A <sub>2</sub>	17 mm	Distance raceway
B	22 mm	Width
V	58 mm	Shoulder diameter housing
Q	M6	Connection thread for lubrication

### Additional information

1	Number of housings
CJ03	Housing
GAY15-XL-NPP-B	Bearing designation

### Temperature range

T <sub>min</sub>	-20 °C	Operating temperature min.
T <sub>max</sub>	120 °C	Operating temperature max.