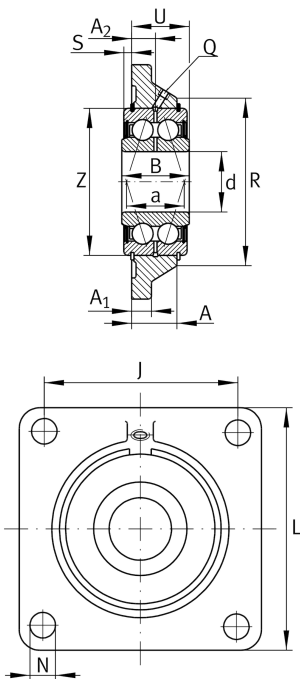


**PCCJ25**

## Flanged housing unit

Housing units PCCJ, four-bolt flanged housing units, cast iron, double row angular contact ball bearing, P seals

## Technical information



## Your current product variant

Material	GG	Grey cast iron
----------	----	----------------

## Main Dimensions &amp; Performance Data

d	25 mm	Bore diameter
L	95 mm	Flange width
U	26,7 mm	Total height unit
C <sub>r</sub>	21.600 N	Basic dynamic load rating, radial
C <sub>0r</sub>	14.900 N	Basic static load rating, radial
C <sub>ur</sub>	760 N	Fatigue load limit, radial
≈m	0,89 kg	Weight

## Mounting dimensions

J	70 mm	Distance fixing bore
N	11,5 mm	Fixing bore
n	4	Number of screwing holes

## Dimensions

A	22,1 mm	Height housing
A <sub>1</sub>	12 mm	Thickness of flange
A <sub>2</sub>	11,7 mm	Distance raceway
B	30 mm	Width
Q	M6	Connection thread for lubrication



### Additional information

---

1	Number of housings
CCJ05	Housing
G5205-2RS-N	Bearing designation