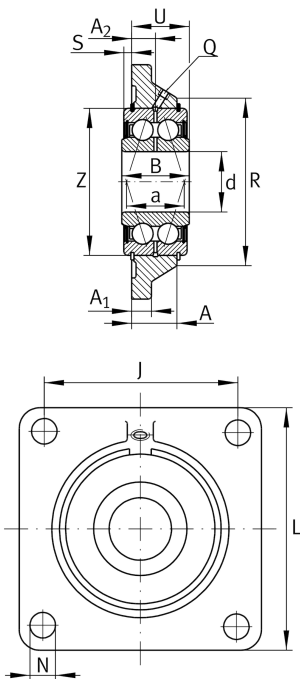


**PCCJ30**

Flanged housing unit

Housing units PCCJ, four-bolt flanged housing units, cast iron, double row angular contact ball bearing, P seals

Technical information



Your current product variant

Material	GG	Grey cast iron
----------	----	----------------

Main Dimensions & Performance Data

d	30 mm	Bore diameter
L	108 mm	Flange width
U	29,7 mm	Total height unit
C _r	30.000 N	Basic dynamic load rating, radial
C _{0r}	21.400 N	Basic static load rating, radial
C _{ur}	1.100 N	Fatigue load limit, radial
≈m	1,12 kg	Weight

Mounting dimensions

J	82,5 mm	Distance fixing bore
N	11,5 mm	Fixing bore
n	4	Number of screwing holes

Dimensions

A	24 mm	Height housing
A ₁	12 mm	Thickness of flange
A ₂	13 mm	Distance raceway
B	34 mm	Width
Q	M6	Connection thread for lubrication



View product details on medias

19.04.2026, 07:23:32 UTC

SCHAEFFLER

Additional information

1	Number of housings
CCJ06	Housing
G5206-2RS-N	Bearing designation