

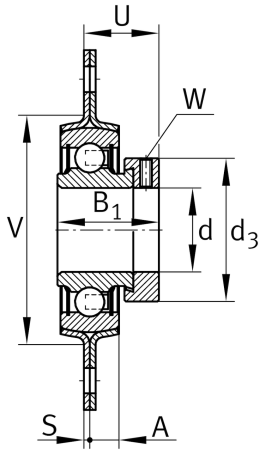
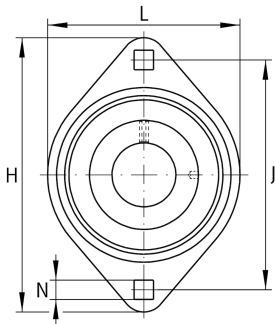
**RALT20-XL-FA125.8**

Flanged housing unit

Flanged housing unit RALT...-XL

X-life

Technical information

**Your current product variant**

Material	Steel sheet	
Manufacturing instruction	FA125.8	Housing with Corrotect coating

Main Dimensions & Performance Data

L	58,7 mm	Flange width
H	81 mm	Height flange
U	20,46 mm	Total height unit
C _{0r G}	2.700 N	Load carrying capacity (housing)
C _G	2.700 N	Load carrying capacity (housing)
≈m	0,17 kg	Weight

Mounting dimensions

J	63,5 mm	Distance fixing bore
---	---------	----------------------

Dimensions

A	7 mm	Height housing
S ₁	2 mm	Thickness of flange
S	2 mm	Thickness of flange
V	48 mm	Shoulder diameter housing



Additional information

2	Number of housings
FLAN42-LST	Housing
RALE20-XL-NPP-B	Bearing designation

Temperature range

T _{min}	-20 °C	Operating temperature min.
T _{max}	120 °C	Operating temperature max.