

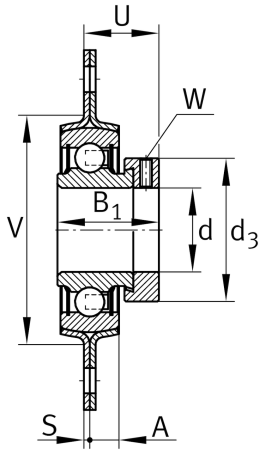
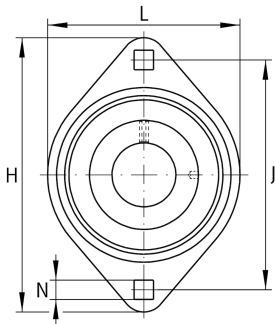
**RALT25-XL**

Flanged housing unit

Flanged housing unit RALT..-XL

X-life

Technical information

**Your current product variant**

Material Steel sheet

Main Dimensions & Performance Data

d	25 mm	Bore diameter
L	71 mm	Flange width
H	95,2 mm	Height flange
U	21,4 mm	Total height unit
C _r	10.100 N	Basic dynamic load rating, radial
C _{0r}	5.900 N	Basic static load rating, radial
C _{ur}	280 N	Fatigue load limit, radial
C _{0rG}	3.000 N	Load carrying capacity (housing)
C _g	3.000 N	Load carrying capacity (housing)
≈m	0,23 kg	Weight

Mounting dimensions

J	76 mm	Distance fixing bore
N	8,7 mm	Fixing square
n	2	Number of screwing holes



Dimensions

A	7,1 mm	Height housing
S	2 mm	Thickness of flange
V	55 mm	Shoulder diameter housing

Additional information

2	Number of housings
FLAN47-LST	Housing
RALE25-XL-NPP-B	Bearing designation

Temperature range

T _{min}	-20 °C	Operating temperature min.
T _{max}	120 °C	Operating temperature max.