

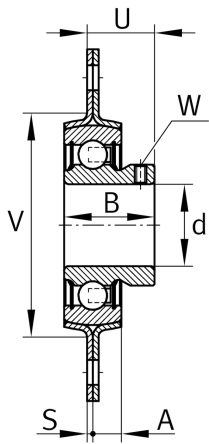
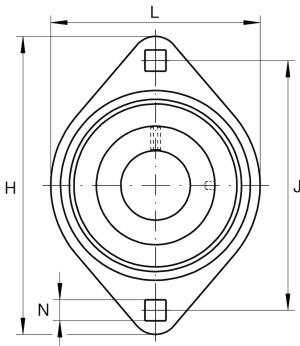
**RATY30-XL**

## Flanged housing unit

Housing units RATY, two-bolt flanged housing units, sheet steel, grub screws in inner ring, P seals

X-life

## Technical information



## Your current product variant

Material	Steel sheet
----------	-------------

## Main Dimensions &amp; Performance Data

d	30 mm	Bore diameter
L	84 mm	Flange width
H	112,7 mm	Height flange
U	23,5 mm	Total height unit
C <sub>r</sub>	19.500 N	Basic dynamic load rating, radial
C <sub>0r</sub>	11.300 N	Basic static load rating, radial
C <sub>ur</sub>	480 N	Fatigue load limit, radial
C <sub>0rG</sub>	5.000 N	Load carrying capacity (housing)
C <sub>g</sub>	5.000 N	Load carrying capacity (housing)
≈m	0,42 kg	Weight

## Mounting dimensions

J	90,5 mm	Distance fixing bore
N	10,5 mm	Fixing bore
N	10,5 mm	Fixing square
n	2	Number of screwing holes



### Dimensions

A	8,7 mm	Height housing
B	30 mm	Width
S <sub>1</sub>	2,5 mm	Thickness of flange
S	2,5 mm	Thickness of flange
V	71 mm	Shoulder diameter housing

### Additional information

2	Number of housings
FLAN62-MST	Housing
AY30-XL-NPP-B	Bearing designation

### Temperature range

T <sub>min</sub>	-20 °C	Operating temperature min.
T <sub>max</sub>	120 °C	Operating temperature max.