

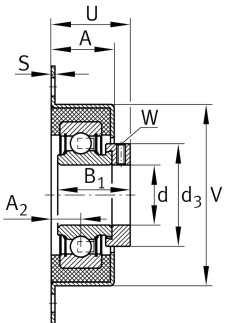
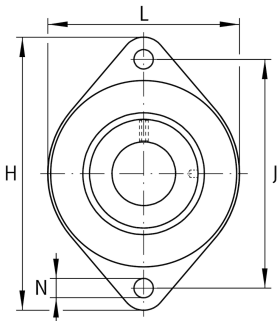
**RCSMF17-XL**

## Flanged housing unit

Housing units RCSMF, two-bolt flanged housing units, sheet steel, rubber interliner, eccentric locking collar, P seals

X-life

## Technical information



## Your current product variant

Material	Steel sheet
----------	-------------

## Main Dimensions &amp; Performance Data

d	17 mm	Bore diameter
L	70 mm	Flange width
H	114 mm	Height flange
U	34,8 mm	Total height unit
C <sub>r</sub>	9.800 N	Basic dynamic load rating, radial
C <sub>0r</sub>	4.750 N	Basic static load rating, radial
C <sub>ur</sub>	248 N	Fatigue load limit, radial
C <sub>0rG</sub>	900 N	Load carrying capacity (housing)
C <sub>g</sub>	900 N	Load carrying capacity (housing)
≈m	0,262 kg	Weight

## Mounting dimensions

J	92 mm	Distance fixing bore
N	10,5 mm	Fixing bore
n	2	Number of screwing holes



### Dimensions

A	27 mm	Height housing
A <sub>2</sub>	12,7 mm	Distance raceway
S	1,5 mm	Thickness of flange
V	68 mm	Shoulder diameter housing

### Additional information

2	Number of housings
FLAN65-RCSMF	Housing
GRG.RCSM40/65	Rubber interliner designation
RAE17-XL-NPP-FA106	Bearing designation

### Temperature range

T <sub>min</sub>	-20 °C	Operating temperature min.
T <sub>max</sub>	120 °C	Operating temperature max.