

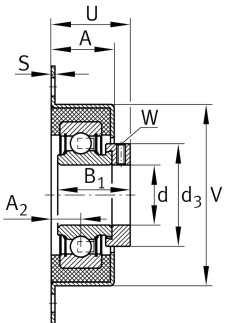
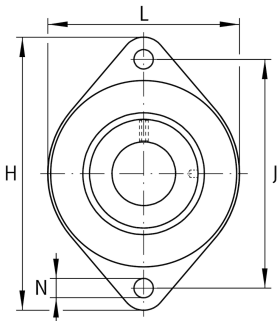
**RCSMF20-XL**

Flanged housing unit

Housing units RCSMF, two-bolt flanged housing units, sheet steel, rubber interliner, eccentric locking collar, P seals

X-life

Technical information



Your current product variant

| | |
|----------|-------------|
| Material | Steel sheet |
|----------|-------------|

Main Dimensions & Performance Data

| | | |
|------------------|----------|-----------------------------------|
| d | 20 mm | Bore diameter |
| L | 70 mm | Flange width |
| H | 114 mm | Height flange |
| U | 36,2 mm | Total height unit |
| C _r | 12.800 N | Basic dynamic load rating, radial |
| C _{0r} | 6.600 N | Basic static load rating, radial |
| C _{ur} | 315 N | Fatigue load limit, radial |
| C _{0rG} | 1.100 N | Load carrying capacity (housing) |
| C _g | 1.100 N | Load carrying capacity (housing) |
| ≈m | 0,32 kg | Weight |

Mounting dimensions

| | | |
|---|---------|--------------------------|
| J | 92 mm | Distance fixing bore |
| N | 10,5 mm | Fixing bore |
| n | 2 | Number of screwing holes |



Dimensions

| | | |
|----------------|---------|---------------------------|
| A | 27 mm | Height housing |
| A ₂ | 12,7 mm | Distance raceway |
| S | 1,5 mm | Thickness of flange |
| V | 68 mm | Shoulder diameter housing |

Additional information

| | |
|--------------------|-------------------------------|
| 2 | Number of housings |
| FLAN65-RCSMF | Housing |
| GRG.RCSM47/65 | Rubber interliner designation |
| RAE20-XL-NPP-FA106 | Bearing designation |

Temperature range

| | | |
|------------------|--------|----------------------------|
| T _{min} | -20 °C | Operating temperature min. |
| T _{max} | 120 °C | Operating temperature max. |