

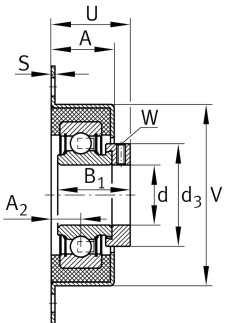
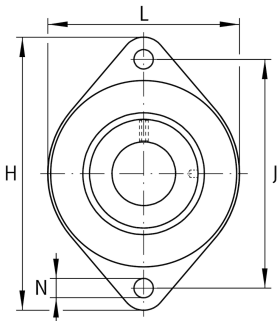
**RCSMF25-XL**

Flanged housing unit

Housing units RCSMF, two-bolt flanged housing units, sheet steel, rubber interliner, eccentric locking collar, P seals

X-life

Technical information



Your current product variant

Material	Steel sheet
----------	-------------

Main Dimensions & Performance Data

d	25 mm	Bore diameter
L	70 mm	Flange width
H	114 mm	Height flange
U	36,2 mm	Total height unit
C _r	14.000 N	Basic dynamic load rating, radial
C _{0r}	7.800 N	Basic static load rating, radial
C _{ur}	370 N	Fatigue load limit, radial
C _{0rG}	1.400 N	Load carrying capacity (housing)
C _g	1.400 N	Load carrying capacity (housing)
≈m	0,34 kg	Weight

Mounting dimensions

J	92 mm	Distance fixing bore
N	10,5 mm	Fixing bore
n	2	Number of screwing holes



Dimensions

A	27 mm	Height housing
A ₂	12,7 mm	Distance raceway
S	1,5 mm	Thickness of flange
V	68 mm	Shoulder diameter housing

Additional information

2	Number of housings
FLAN65-RCSMF	Housing
GRG.RCSM52/65	Rubber interliner designation
RAE25-XL-NPP-FA106	Bearing designation

Temperature range

T _{min}	-20 °C	Operating temperature min.
T _{max}	120 °C	Operating temperature max.